



ATS Global B.V.

ATS Inspect

Product Features



Your Toolkit for Unsurpassed Product Quality

Find out how ATS Inspect raises product quality while reducing the costs associated to quality.

Catch defects. Improve quality. Reduce Costs.

ATS Inspect is a software solution that provides two approaches to raising product quality while lowering costs:

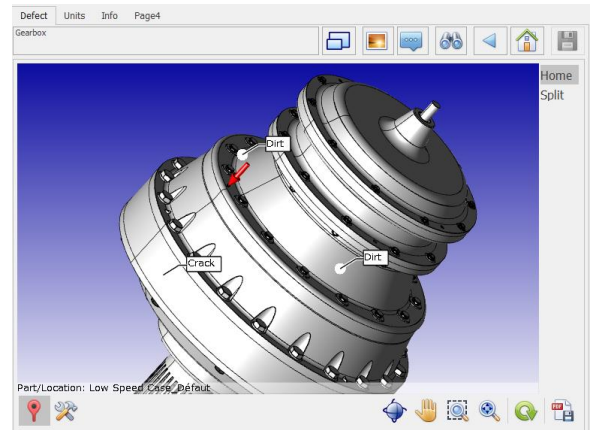
- ▶ Collects, analyzes and reports attribute data in manufacturing processes where defect information is critical to the production of quality parts.
- ▶ Collects, analyzes and reports variable data to ensure that weights, temperatures, torques and any other critical measurements stay within specified limits.

3D Inspection

The operator can identify defects using 3D CAD models imported directly from your PLM system.

All major CAD formats are supported allowing you to import your existing models. The name and ID of every component within the model can also be imported into the database which will greatly reduce your setup time.

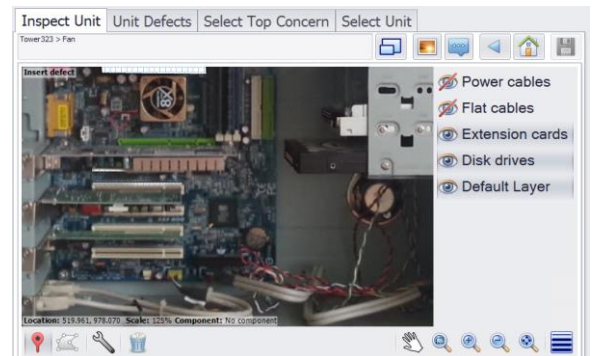
When you need to add a defect you can rotate the model, using a mouse or touch-screen, zoom in to the required area and assign the defect.



By bookmarking key positions the operator can jump to preset perspectives with cut-throughs and with components removed so that they can place defects inside the product without the need for multiple views and photos to be taken.

Layered Inspection

The operator can place defects on multi-layer views. This allows them to strip away information to see *inside* the object being inspected.

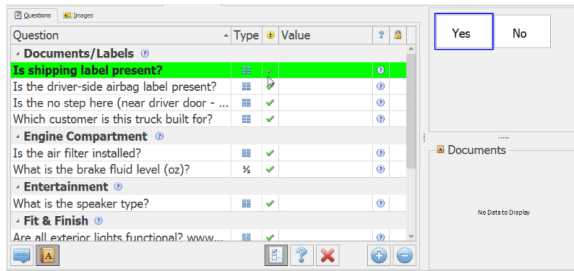


For example, if you were inspecting the interior of a car door you could have layers that represent the door panel, wiring harness behind the door panel and finally the shell of the door.

This layered approach mimics real-world inspections and speeds up data collection which reduces costs and means no defect can remain hidden for long.

Eliminate Paper Checklists

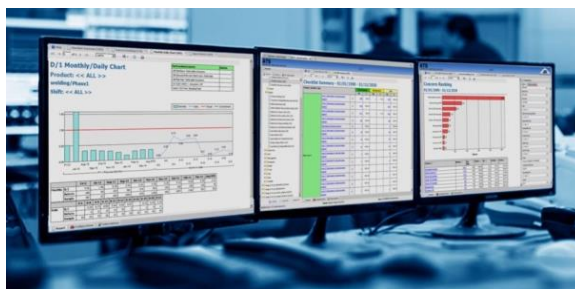
ATS Inspect includes electronic checklists that can be used to record issues and to ensure all required visual and option content checks have been completed correctly. This eliminates paper checklists and the difficulty of preserving, retrieving and using checklist data for later review and analysis.



Reporting and Analysis

ATS Inspect comes with over 70 pre-defined reports that are available through [ATS Advanced Reporting Services \(ARS\)](#), our powerful reporting and analysis tool that builds on the strengths of Microsoft SSRS ©.

The web-based reports can be viewed anywhere in the world and if the available reports don't fulfil your needs you can create your own, calling on all the data available within ATS Inspect as well as from other sources.



Using ATS ARS you'll be able to save several versions of the same report so that you can compare and contrast different sets of parameters.

You can also automatically generate and send reports via email at regular intervals. Do you need that quality report on your desk at 9am every Monday morning? It'll be there.

Reports can also be viewed in the data collection applications. These reports, presented at the point-of-origin, will allow operators to see trends emerging in real time.

For example, if a machine is moving out of alignment, causing increasing defects, then the operator at the machine can see it happening and fix the problem before it gets any worse.

An Integrated Solution

ATS Inspect is able to fully integrate with enterprise systems (ERP/PLM/MES/MOM). This allows it to receive build data and return quality data. It also means that ATS Inspect can provide full unit and quality traceability throughout the plant.

Data can also be exchanged with equipment on the plant floor. This can mean receiving data from measuring devices and vision systems or sending down go/no go decisions based on the quality of each unit.

This integration is made possible by ATS Bus which acts as a standardised channel through which all production data can be exchanged. Instead of creating a customised connection for every combination of ATS software, enterprise software and plant machinery everything simply plugs into ATS Bus. For more information see the ATS Bus [webpage](#).

Instant Event Notification

ATS Inspect lets you instantly inform personnel of the current state of quality throughout the production facility.



Whether it's a regular update or a quality issue alert, ATS Inspect will let the right people know right away via e-mail and static display devices, such as message boards and overhead monitors.

The criteria for an alert and the information the alert contains are highly configurable but could include quality thresholds, production thresholds, critical defects or production statuses.

See the Cost of Quality

ATS Inspect allows you to see the cost of quality. Repair costs can be associated to every part/repair type combination. You can then calculate the repair cost of each product.

The estimated repair time can also be specified during configuration. Then, when a repair is carried out, the labour cost can be calculated as each user can have an hourly rate associated to them. Using these tools you can see the labour and material costs tied up on the plant floor at any given time.

Record Variable Data

As well as recording attribute data ATS Inspect can also record variable data. It allows operators to record Critical To Quality characteristics such as lengths, diameters, temperatures, voltage and weight.

You can set control limits to alert operators as soon as they enter measurements that show the system is out of control, allowing them to take the appropriate countermeasures.

Variable data can be viewed in statistical process control charts for real-time analysis.

Reference Documents

It's often useful to have some extra information about how to carry out an inspection. This is where Reference Documents come in handy.

Operator instructions, visual aids or whatever else you may need can be accessed by the operator when they need them most.

Reference documents can be associated specific products, checklist questions, parts, concerns or repairs so no matter what stage of the inspection the operator is at they'll have the right information to hand.

Divide Complex Inspections into Steps

Product inspections can vary enormously. A single unit may have hundreds or thousands of attributes that need to be checked.

ATS Inspect is prepared for this and allows you to set up inspection steps that will guide the operator through the process in a structured, methodical manner. Checklist questions can be asked at each step to ensure that nothing is overlooked.

Customizable User Interfaces

Every company is unique and there will even be different requirements between the different workstations within each company. To allow for this ATS Inspect lets you completely customize your user interfaces.

Place the controls where you need them and then modify the look and feel as you require. You can have different user interfaces for different stations that are designed around the requirements of each location.



And you aren't limited by the functionality within ATS Inspect. The open architecture allows you to add event-driven logic to your end-user interfaces giving you all the power you need to customize the application behavior.

Take a Picture

You can take a photo of a quality concern and store it alongside the defect in the system. This gives you a true record of what's happening on the production line.



Mobile Checklist

Warranty claims can put a real dent in profits. ATS Inspect tackles this problem at the most critical point of the manufacturing process – the point of delivery.

Using a handheld device an operator can carry out final checks on a product before it leaves the plant. Once the serial number of the unit has been entered, a tailor-made checklist will be presented to the operator, allowing them to confirm that any customer-requested features have been correctly installed.



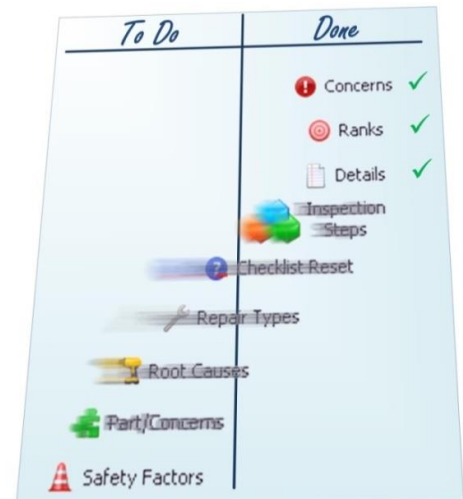
Mobile Repair

Carrying a handheld device, an operator can move freely around the line performing repairs then simply identify the corrected defect on a repair ticket when it is done. A second operator can then confirm the repairs have been carried out using a similar device.

These double-checks are instantly stored in the system meaning that no open defects get through and the customer will only ever see the product the way you intended it.

Data Import

Users can import parts, locations, concerns, details, repair types and product data directly into the ATS Inspect database. This eliminates the need for manual data entry of information already stored in other databases or files.



Part of the ADOS Suite

ATS Inspect is part of the award-winning ADOS (Attribute, Dimensional, Operational and Smart) software suite. ADOS gives you world-class data collection, reporting and analysis while its cross-application integration provides endless avenues along which to develop and expand your manufacturing potential. For more information on ATS ADOS visit the [website](#).



ATS is an **Independent Solution Provider**, with over 30 years' experience in the manufacturing systems arena and a wealth of experience undertaking Continuous Improvement initiatives and Manufacturing IT solution design, deployments and 24/7 support assignments.

www.ats-global.com