



ATS Bus connects every manufacturing system within your company, from the machines on the shop floor to the systems that oversee production. By collecting, combining and analyzing all of your manufacturing data, no matter the source or the format, ATS Bus presents a fast return on investment and will help you achieve your continuous improvement goals.

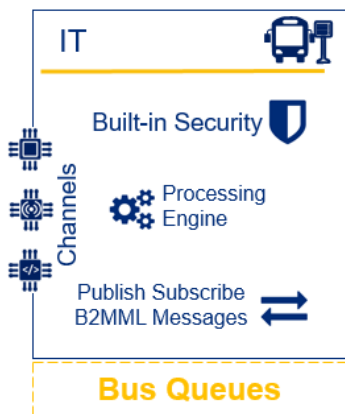
Business Benefits

Better Decision Making

When using standards like ISO 22400 and SCOR to define your strategic, tactical and operational KPIs, you need a reliable and cost effective manufacturing service bus to integrate different sources of data and information.

ATS Bus will assist by turning gathered data into useful, near real-time KPIs that can reveal opportunities for improvement in manufacturing operations. KPIs can also be compared across multiple plants, allowing you to discover the best practices that make a certain plant successful.

Enterprise and Manufacturing IT Integration



Connect any ERP, PLM, MES, LIMS and WMS systems using out of the box channels.

Manage production orders, download recipes and upload production performance.

Download work instructions, machine instructions, and robot and CNC programs.

Rely on resilient data by buffering data locally and utilizing handshakes.

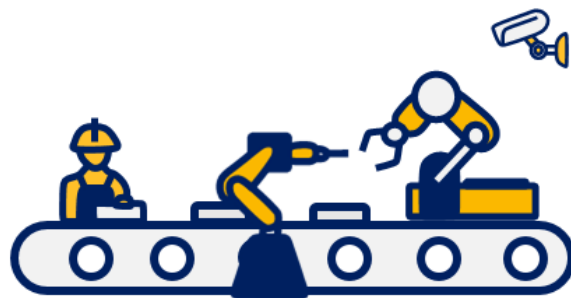
Monitor for data errors and send failed messages for reprocessing.

Expanding and Modifying Your Plant

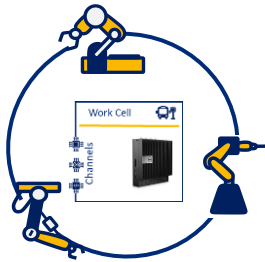
Rather than having to create a separate connection to every other existing network, any new system will simply connect to ATS Bus. All data translation, communication and security requirements are then handled by ATS Bus. This reduces integration and running costs by reducing the number of separate data interfaces.

The same applies when adding, exchanging or even removing machinery on the production line.

ATS Bus can communicate with any interface protocols so even if the connection technology changes ATS Bus can communicate with it. This reduces the costs and complications involved in modifying your plant, giving you increased flexibility when the market pushes for a shift in production.



Autonomous Cells



- Decisions and actions taken based on data at individual work cells.
- Connect any machines, equipment, tools and sensors using out of the box interfacing.
- Run on an industrial PC directly connected to the industrial network.
- Manage operations and jobs data for workplace, line and cell.
- Talk a standard ISA95 manufacturing language using B2MML notation.

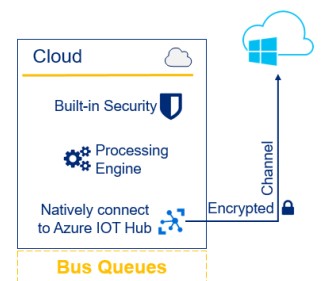
Accelerate New Product Introduction

The flexibility of ATS Bus will even help you to accelerate new product introduction as it can easily distribute your centrally managed work instructions, machine instructions, recipes, specifications, and robot and CNC programs, in the shortest time possible.

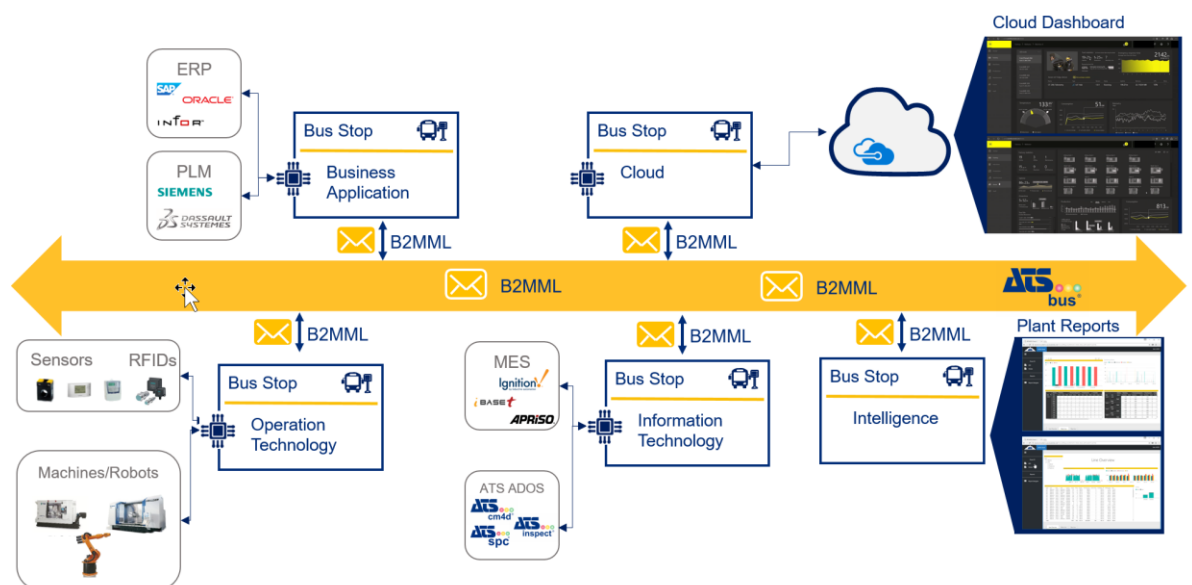
Cloud Integration for Cost Effective Implementation

You can upload any message flowing through ATS Bus to the Cloud using a secure Microsoft channel. Cloud data storage reduces server costs and gives you increased flexibility when your data requirements change.

With a cloud solution data will always be securely stored, no matter what happens on-site. It also means that data can be exchanged between plants at different sites or made available securely up and down the supply chain so that lead times and Just-in-Time production costs can be brought down.



System Overview



ATS is The *Independent Solution Provider* for Smart Digital Transformation. ATS is a global company offering decades of experience in strategy, deployment and support of IT & OT (Operations Technology) solutions. our experience, your success.

www.ats-global.com

www.ats-global.com/ats-bus